



NEWS

Placement of servers with continuous surveillance and service

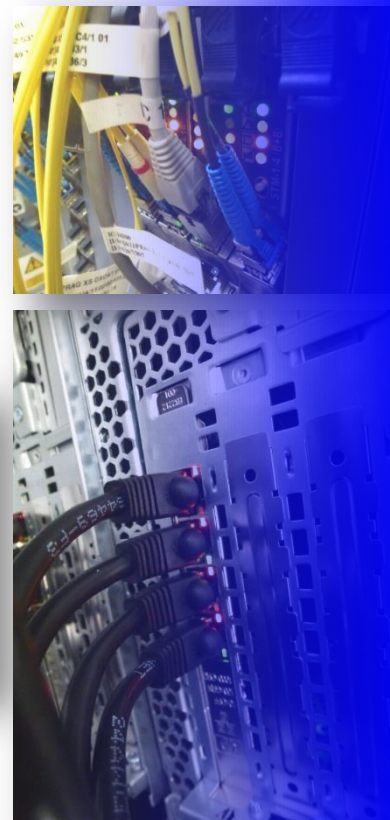
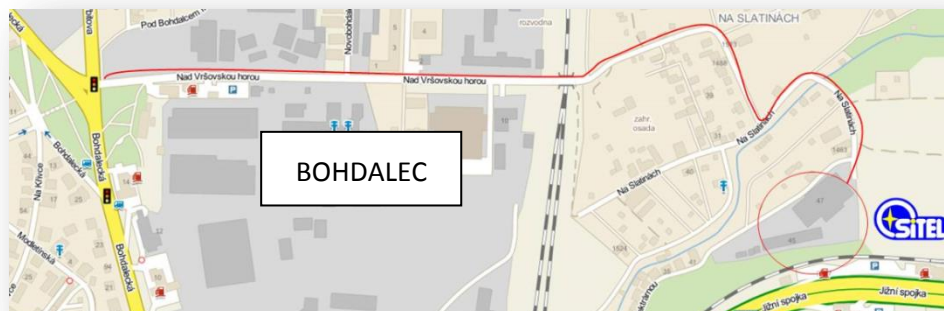
Are you looking for a safe and professional placement of your apps and data? Do you welcome individual and customer-oriented care and access? Are you looking for direct connectivity to local and international networks? If you don't have a wired connection, we can build a radio link to connect you to your servers.

SERVERHOUSING



Solution description

SITEL offers the possibility of placing servers in the rooms of the internationally acclaimed CE Colo data centre, located at Prague 10, Nad Elektrárnou 1428/47 Street, meeting the most demanding standards for the placement of telecommunication technologies. In the modern CE-Colo data centre there is termination of transport tracks of many transit operators providing their services in the territory of the Czech Republic. In addition to wide offer of IP connectivity providers, the main benefits are the neutrality, stability and high security of the data centre. Irrespective of the number of devices you install, you can also take advantage of one of the leading data centres and interconnection nodes in Central Europe.



the main advantages of serverhousing services provided by SITEL, include in particular:

- installation of servers in high-tech rooms (air conditioning, automatic extinguishing with inert gas, supply AC 230V and DC 48V backed up with UPS and diesel aggregates)
- variable server placement options - "shelf" mode, shared rack placement, custom lockable rack or part of it
- possibility of directly dedicated foreign connectivity, allocation of PA addresses, BGP routing, backup DNS, MX ...
- IP connectivity offered in the international transit range of 1Gbps, direct connectivity to NIX = 1Gbps and to SIX 100Mbps, with the possibility of selecting other providers operating in the area
- 24/7 supervision and monitoring centre
- possibility of remote reset or off / on server
- the possibility of negotiating remote-hands services provided by professional technicians present in the 24/7 datacentre
- possibility to set up an analogue or digital line for modems or wireless link placement - very good visibility, built masts for wireless technologies
- easy accessibility and trouble-free parking

